

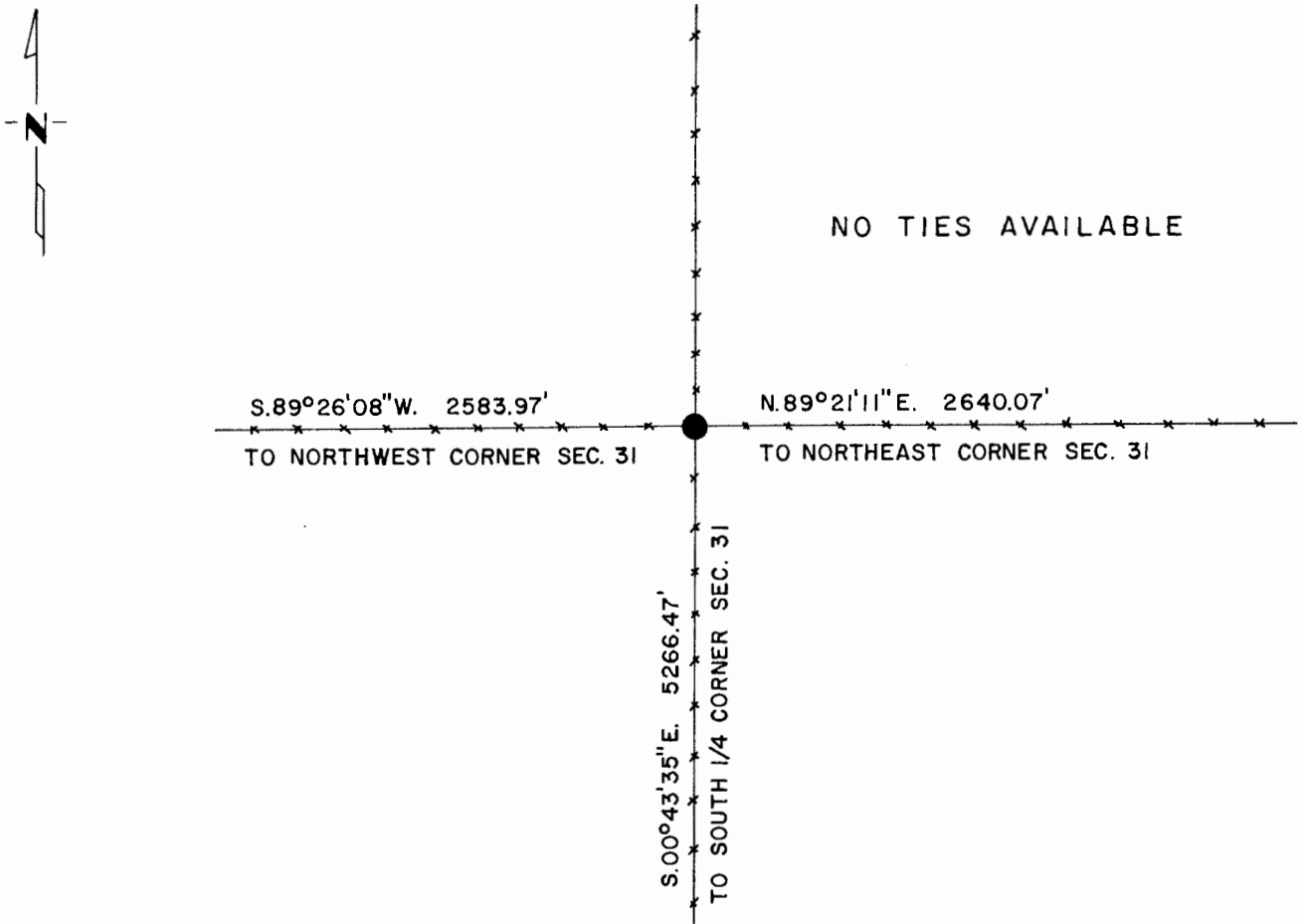
CERTIFICATE OF LOCATION OF GOVERNMENT CORNER

NORTH QUARTER Corner of Section 31, Township 106, Range 42, 5 P.M.
 STATE OF MINNESOTA, County of MURRAY

At the corner location shown on the sketch:

- On 11-27-79 found a 1/2" IRON PIPE UP 0.2'-2' NORTH OF CORNER FENCE POST AT
DATE
P.L. OF FENCES NORTH-SOUTH-EAST....2' SOUTH OF FENCE WEST.
 - left monument as found, lowered monument, removed monument (explain)
- On _____ placed a _____
DATE

SKETCH OF REFERENCE TIES



Statement of evidence relative to this corner location is on back of page.

I hereby certify that this document and the data contained herein was prepared by me or under my direct supervision.

Bert R. Eveland 1-23-80
SIGNATURE DATE

Registration No. 10516

- Land Surveyor, Professional Engineer
- County Surveyor, County Engineer

OFFICE OF THE REGISTER OF DEEDS

County of Murray

I hereby certify that this document was filed in the Reg. of Deeds office at 8:30 a. M. on the 9th day of October A.D. 1981

Register of Deeds Willard W. Ohme

By _____, Deputy

DOCUMENT NO. 164604

Statement of Evidence:

MINNESOTA DEPARTMENT OF NATURAL RESOURCES, BUREAU OF ENGINEERING.

North Quarter Corner of Section 31, Township 106, Range 42

Corner was originally established and monumented with a post by the General Land Office in 1866.

In 1954, the DNR assumed the corner and set an iron pipe next to a corner fence post.

In 1961, the DNR found the iron pipe set in 1954.

In 1973, the DNR contacted the Murray County Offices of the Auditor, Recorder and Engineer. No recorded survey data could be found subsequent to the original GLO survey.

In November, 1979, the DNR found a 1/2" iron pipe as shown and described on this certificate.